

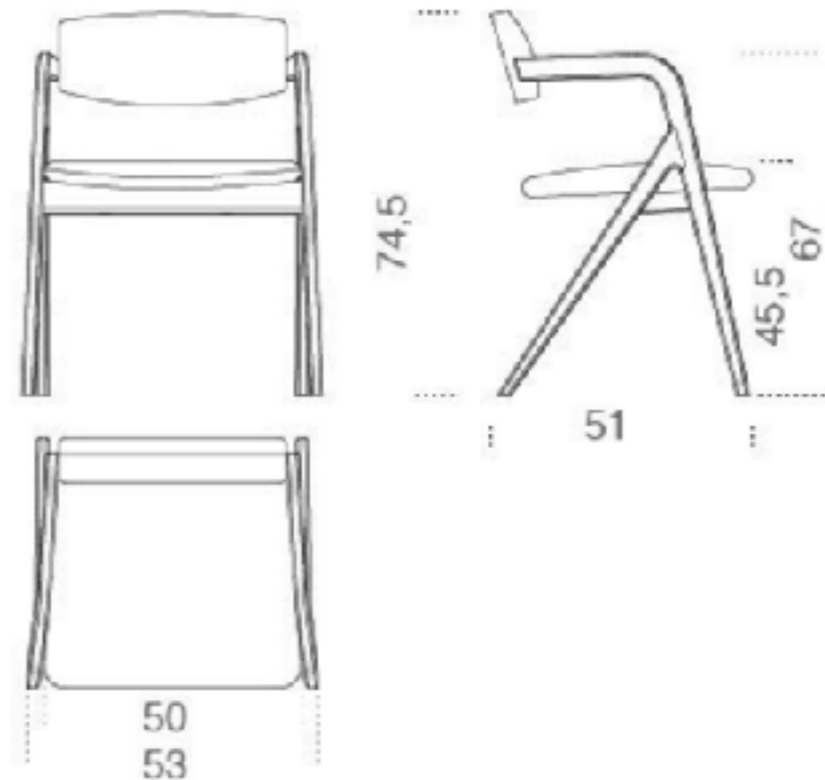


Keyko

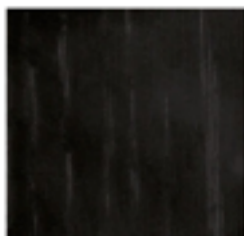
U Z C A

Description

Chair with black (mod. Layer) lacquered open pore solid curved ash structure. Available also in natural ash, tobacco stained or white open pore lacquered ash. Seat and backrest covered by fabric or leather as per sample.



Legno / Wood



*Nero poro
aperto (Layer)
Black open pore
(Layer)*

Tessuto Cat.A / Fabric Cat.A



*Mesh ochre 006
Mesh ochre 006*



*Reggio mink
010
Reggio mink
010*



*Reggio taupe
070
Reggio taupe
070*



*Russel canapa
002
Russel canapa
002*



*Russel clay
003
Russel clay
003*



*Russel dark
grey 017
Russel dark
grey 017*



*Russel mink
016
Russel mink
016*

Velluto Cat.A / Velvet Cat.A



Velvet blue 408
Velvet blue 408



Velvet evo green
7215
Velvet evo green
7215



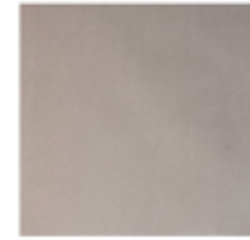
Velvet ink
black 800
Velvet ink
black 800



Velvet mink
518
Velvet mink
518



Velvet ochre
1688
Velvet ochre
1688



Velvet pearl
206
Velvet pearl
206



Velvet rose
powder 4512
Velvet rose
powder 4512



Velvet sage
green 6381
Velvet sage
green 6381



Velvet taupe
537
Velvet taupe
537

Tessuto Cat.B / Fabric Cat.B



*Avassi blue
039
Avassi blue
039*



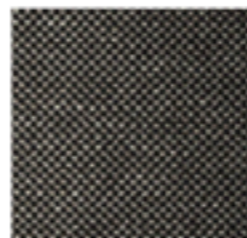
*Avassi evo
green 041
Avassi evo
green 041*



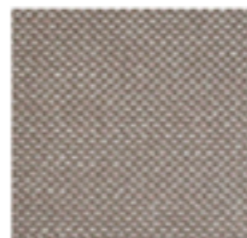
*Avassi
liquorice black
033
Avassi
liquorice black
033*



*Damié grey
082
Damié grey
082*



*Damié
liquorice black
011
Damié
liquorice black
011*



*Damié rose
powder 111
Damié rose
powder 111*



*Damié sand
031
Damié sand
031*



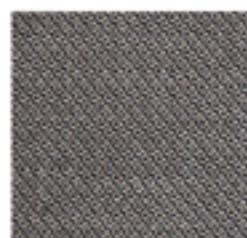
*Diago clay 511
Diago clay 511*



*Diago milk
500
Diago milk
500*



*Diago violet
530
Diago violet
530*



*Perseo black
001
Perseo black
001*



*Perseo clay
022
Perseo clay
022*



*Sofi canapa
100
Sofi canapa
100*



*Sofi grey 062
Sofi grey 062*